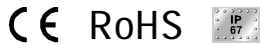




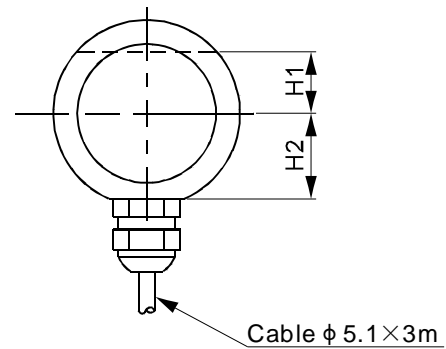
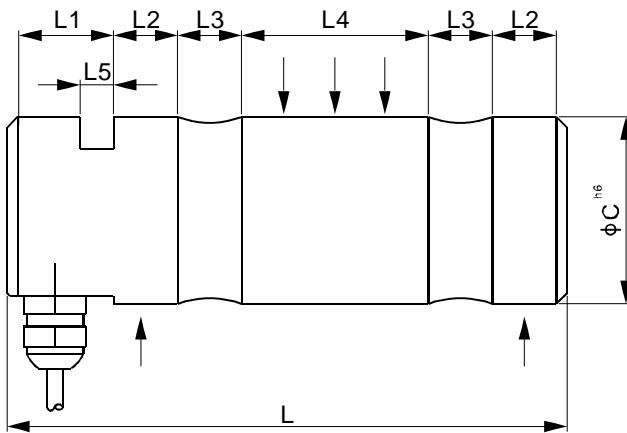
### Features:

- Capacities: 2t...70t
- Small size, easy to install
- Safe load limit (EL): 200% of Cn
- Protection to IP67
- Options:
  - Service temperature range up to 250°C
  - Service lightning protection
  - Tailor made to meet different applications

Approvals:



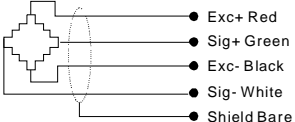
### Dimensions (in mm)



LOAD PINS

RATED CAPACITY	C	H1	H2	L	L1	L2	L3	L4	L5
t/mm									
2...5	35.0	11.5	16.0	105.0	20.0	12.0	12.0	35.0	6.30
10	50.0	20.0	22.5	152.0	30.0	18.0	18.0	48.0	10.5
20	65.0	22.5	28.5	190.0	32.0	20.0	25.0	65.0	10.5
40	85.0	22.5	28.5	256.0	36.0	35.0	28.0	89.0	12.5
70	100.0	34.0	35.0	328.0	40.0	50.0	32.0	120.0	15.0

## Specifications

Type		535TS				
Rated capacity	t	2; 5	10	20	40	70
Shipping Weight (Approx.)	kg	0.8	2.1	10.4	11.2	20
Sensitivity (Full capacity output)	mV/V	1±10%				
Zero balance	mV/V	±0.05				
Temperature effect on sensitivity (Tk <sub>c</sub> )	% of C <sub>n</sub> /K	<±0.020				
Temperature effect on zero balance (Tk <sub>o</sub> )	% of C <sub>n</sub> /K	<±0.020				
Non-linearity (di <sub>in</sub> )	%	<±0.5				
Repeatability (d <sub>rep</sub> )	%	<±0.3				
Hysteresis error (d <sub>hy</sub> )	%	<±0.5				
Creep (d <sub>CR</sub> ) in 30 min.	%	<±0.2				
Input resistance (R <sub>LC</sub> ) [Red(+)-black(-)]	Ω	400±25				
Output resistance (R <sub>o</sub> ) [Green(+)-white(-)]	Ω	350±3				
Reference excitation voltage (U <sub>ref</sub> )	V(DC/AC)	0.5... 10				
Maximal excitation voltage	V(DC/AC)	15				
Insulation resistance (R <sub>is</sub> )	GΩ	>2 [50 VDC]				
Nominal temperature range	°C	-10...+40				
Service temperature range	°C	-30...+70				
Storage temperature range	°C	-50...+85				
Safe load limit (EL)	% of C <sub>n</sub>	200				
Breaking load (E <sub>d</sub> )	% of C <sub>n</sub>	400				
Lateral load limit (E <sub>lq</sub> )	% of C <sub>n</sub>	50				
Permissible dynamic load (F <sub>srel</sub> )	% of C <sub>n</sub>	100				
Seal Type		Environmentally-sealed, IP67				
Material		Stainless steel				
Wiring Diagram		 <ul style="list-style-type: none"> <li>● Exc+ Red</li> <li>● Sig+ Green</li> <li>● Exc- Black</li> <li>● Sig- White</li> <li>● Shield Bare</li> </ul>				

## Application Examples (in diagram form)

