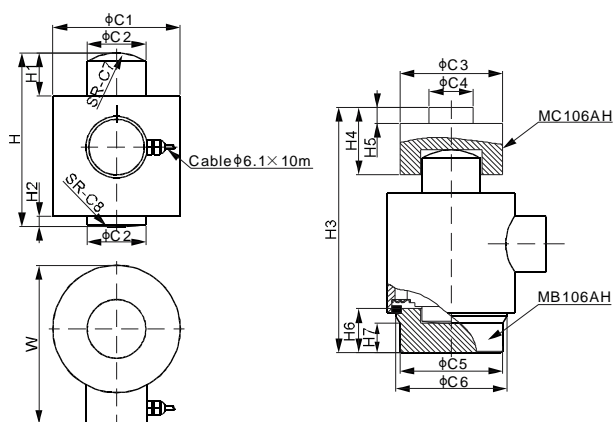


106AH

Alloy Steel



Mounting hardware to be ordered separately.

Material of both MB106AH & MC106AH are alloy steel with zinc plating

DIMENSIONS

RATED CAPACITY	C1	C2	C3	C4	C5	C6	C7	C8	H	H1	H2	H3	H4	H5	H6	H7	W
kg/mm																	
5,000-50,000	87.0	40.0	70.0	30.0	70.0	76.0	37.5	150.0	118.5	29.5	7.0	167.5	46.0	11.0	30.0	20.0	108.5
lb/inches (conversion of above dimensions)																	
11,023.1-110,231.1	3.43	1.57	2.76	1.18	2.76	2.99	1.48	5.91	4.67	1.16	0.28	6.59	1.81	0.43	1.18	0.79	4.27

SPECIFICATIONS

Full Scale Output	1.5 ± 0.25% mV/V	Recommended Excitation	10V (15V Maximum)
Zero Balance	± 0.02 mV/V	Insulation Resistance	> 2 [50V DC] GΩ
Non-linearity	< ± 0.023%	Compensated Temperature Range	-10°C to 50°C / 14°F to 122°F
Repeatability	< ± 0.017%	Safe Overload	150% of full scale
Hysteresis Error	< ± 0.017%	Breaking Overload	300% of full scale
Creep in 30 min.	< ± 0.023%	Seal Type / IP Rating	Welded Seal / IP67
Input Resistance	770 Ω ± 30	Cable Color Code	Exc+ Red Exc- Black Sig+ Green Sig- White Shield Bare
Output Resistance	700 Ω ± 5		
Element Material	Alloy Steel, Nickel Plated		

PART NUMBER

Rated Capacity	Part No.	Shipping Weight (kg) Approx.
5t	106AH-5t	5.0
10t	106AH-10t	5.0
20t	106AH-20t	5.0
30t	106AH-30t	5.0
50t	106AH-50t	5.0

INTERCHANGEABLE PRODUCTS

Manufacturer	Model
Sartorius	PR6221*
Vishay Tede a Huntleigh	120**

* Sartorius PR6221 has a stainless steel element with an input resistance of 1080Ω ± 1Ω and output resistance of 1010Ω ± 1Ω. Sartorius PR6221 mounting kit dimensions are different.

** Vishay Tede a Huntleigh 120 has a stainless steel element with an input resistance of 670Ω ± 10Ω and output resistance of 605Ω ± 5Ω. The top mounting cap of the 50t capacity is different.