

# LaserLight3™ Color Remote Display with Messaging

**RICE LAKE**  
WEIGHING SYSTEMS

*As of: Wednesday, May 14,  
2025*



## Standard Features

---

- Vibrant 128- by 32-pixel LED color display with non-glare lens; high-intensity digits up to 5 inches tall
- Color commands change background and foreground text
- Auto Learn identifies and interprets the source weight data string for maximum compatibility with a wide range of indicators
- Versatile layout choices include mirror mode, 1-line, 2-line and quadrant format
- Dynamic messaging views can scroll, slide or flash
- Display stop/go light symbols/arrows with digits up to 4 inches tall
- Selectable time/date when weight is at zero
- Integrated weathertight keypad for sending configurable scale commands to the indicator
- Durable IP66 enclosure with Gore-Tex® breather vent to inhibit internal moisture
- RS-232, RS-422, 20 mA and Ethernet TCP/IP
- Mounting options include VESA, flange and pole configurations

## Options

- Wireless LAN, Wi-Fi interface 802.11 a/b/g/n
- Wireless interface, pair of ConnexLink radios and mount
- Pole mount kit for 4 to 8 inch pole

- VESA kit for 2 to 6-inch pole
- Sunshade visor, 8-inch painted steel

# Bright, Easy-to-read LED Remote Display

---

The LaserLight3 color remote display is a versatile solution for facilities needing clear visuals, from floor to truck scales. Multiple layout choices include mirror mode, 1-line, 2-line and quadrant formats to adjust the layout to facility needs. Results are clear at a distance with a 128- by 32-pixel LED display featuring a nonglare lens and digits up to 5 inches tall.

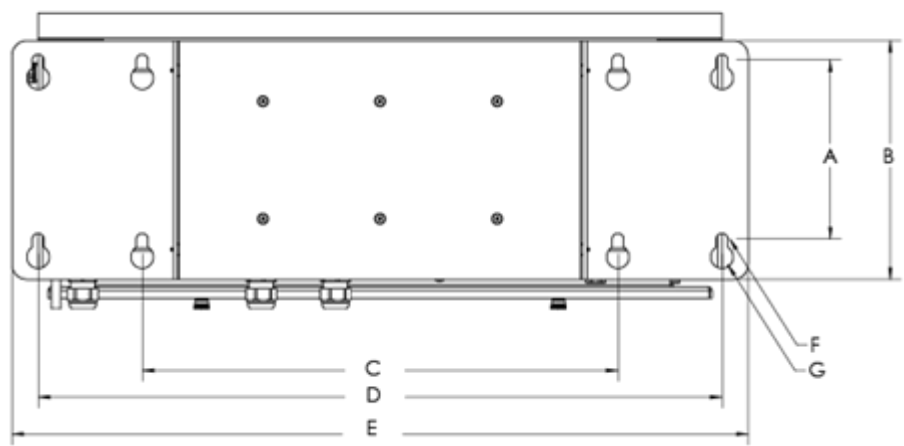
## LaserLight 3 Color Remote Display with Messaging Specifications

---

<b>Power Consumption:</b> AC voltages: 100 to 240 VAC; 50/60 Hz 120 watt (120 VAC) 95 watt (12 VDC)	<b>Communication Ports:</b> Ethernet TCP/IP, RS-232, RS-485, 20 mA current loop	<b>Time:</b> Software enable, 12- or 24-hour format
<b>Output Interface:</b> Ethernet TCP/IP, independently configurable echo port	<b>Character Format:</b> 7 or 8 data bits; even, odd, or no parity; 1 or 2 stop bits	<b>Date:</b> Software enable, US or ISO format
<b>Input Data Format:</b> Baud Rate: 1200, 2400, 4800, 9600, 19200, 38400, 57600 and 115200 self-learning or configurable	<b>Maximum Viewing Distance:</b> 4-inch character: 100 ft (30 m) 5-inch character: 150 ft (46 m)	<b>Temperature:</b> Operating: -40 °F to 120 °F (-40 °C to 49 °C)
<b>Update:</b> Continuous or out-of-motion modes Message interrupt mode	<b>Viewing Angle:</b> 160°	<b>Rating/Material:</b> IP66 weathertight Mild steel, powder-coated
<b>Digital I/O:</b> Four I/O read or set 5 V logic	<b>Display:</b> Bright, outdoor color LED lamps 128 × 32-pixel, 4 mm pitch Decimal or comma indication Weight display with units and mode Message display 1, 2 or 4 lines Stop/go and directional arrow	<b>Weight:</b> Without wall mount: 14.19 lb (7.81 kg) With wall mount: 20.48 lb (10.66 kg) With sunshade and wall mount: 29.79 lb (14.88 kg)
	<b>Keys/Buttons:</b> Integrated keypad	<b>Warranty:</b> Two-year limited

# LaserLight 3 Color Remote Display with Messaging

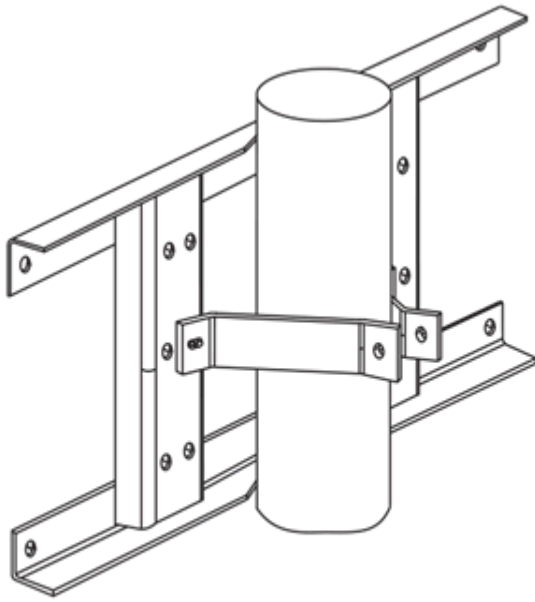
---



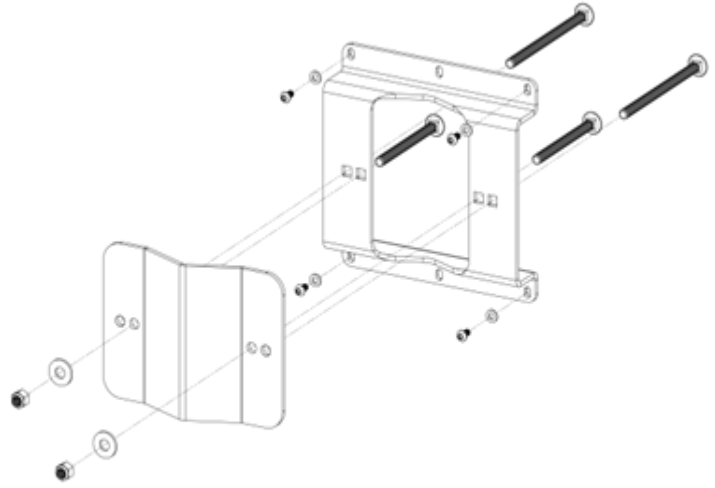
Dimensions			
A	6.00 in (152 mm)	E	25.00 in (635 mm)
B	8.00 in (203 mm)	F	0.39 in (10 mm)
C	16.00 in (406 mm)	G	0.76 in (19 mm)
D	23.00 in (584 mm)		

# LaserLight3 Color Remote Display with Messaging Mounting Options

---



*Flange pole mount kit  
PN 75856*

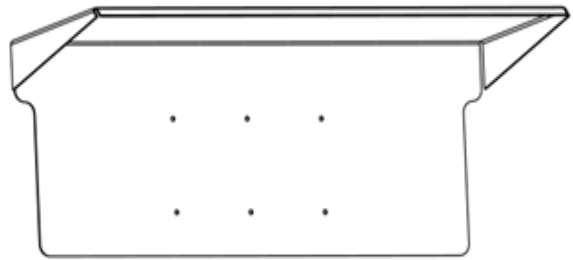


*VESA pole mount kit  
PN 212745*





*Optional sun visor*



*Sunshade  
PN 208807*

## Parts

---

Part #	Description
--------	-------------

### Remote Display

214825	Display,LaserLight3 LL3 Messaging Remote Display, 32x128 LED, 115-230VAC
--------	--

### Weight Indicator

205780	Indicator,LaserLight3 LL3 Large-Display Weight Indicator, 32x128 LED, 115-230VAC
--------	--

## Options

---

Part #	Description
224940	Cantalever,LL3 Sidemount Mild steel canalever mount for LL3, allows display to be turned for viewing. Yellow powder coated finish.
212745	Pole Mount,LaserLight3 Using VESA bracket 2-Inch To 6-Inch Poles
75856	Pole,Mount Kit LaserLight2 4 inch Remote Display & LaserLight3 , Summit Gray
208807	Sunshade,LaserLight3
209118	Ind Opt,Wireless LAN Card RS232/WiFi Interface 802.11 A/B 10/100 XPico for LaserLight3
212753	LaserLight3 RF Kit ConnexLink Transceiver Kit

**www.ricelake.com | 800-472-6703**

*An ISO 9001 Registered Company ©2024 Rice Lake Weighing Systems*