

The HW-HI Series Platform Scales



Features

- **Weighing Capacities of 300 kg and 600 kg**
- **Trade Approval (300 kg model only)**
- **Weighing Resolution of 100g (0.1 kg)**
- **High Visibility Liquid Crystal Display**
- **Dual Power Supply (use either AC power or 4 x C cell batteries)**
- **Auto Power Off (scale switches off automatically after a period of inactivity to preserve battery life)**
- **Large 600 mm x 700 mm Platform**
- **Robust Base Design**
- **Optional RS232C Interface**
- **Fully Adjustable Tilt Display (to suit your viewing angle)**
- **Counting and Percentage Modes**

Designed to efficiently and reliably weigh masses up to 600 kg, this series is ruggedly constructed to meet the harsh environments prevalent in industry. With battery power for portability, a standard mains power adaptor and an optional RS232 data output this versatile high capacity scale will meet all requirements.

A&D
A&D MERCURY PTY. LTD.

Specifications

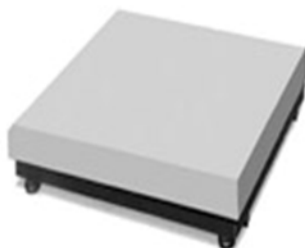
	HW-300KA4	HW-600KA4
Weight Capacity (kg)	300	600
Weight Resolution (kg)	0.1	0.1
Calibration Mass (kg)	200 or 300	400 or 600
Minimum Piece Weight When counting	0.1 kg (100g)	0.1 kg (100 g)
Linearity Error	+/- 150 g	+/- 150 g
Display Type	LCD, Character Height 22 mm	
Operating Temperature	-10~40°C less than 85% RH	
Power Supply	Ac Adaptor or 6 x C cell batteries	
Battery Life	Approximately 150 hrs with alkaline dry cell	
Physical Dimensions	935 mm (H) x 890 mm (D) x 700 mm (w)	
Pan Size	600 mm x 700 mm	
Weight (approx.)	80 kg	

Options

HW OP-03 RS232C Serial Interface

Accessories

AD-8121 Dot Matrix Printer



...Clearly a Better Value

A&D MERCURY PTY. LTD.

ACN 007 556 809

Head Office

32 Dew Street

THEBARTON

South Australia 5031

Telephone (08) 8301 8100

Facsimile (08) 8352 7409

Victorian Office

Unit 4, 313 Arden Street

KENSINGTON

Victoria 3031

Telephone (03) 9372 1522

Facsimile (03) 9372 1193

New South Wales Office

Unit 4, 14 Abbott Road

SEVEN HILLS

New South Wales 2147

Telephone (02) 9674 5466

Facsimile (02) 9674 2544

Email: sales@andmercury.com.au
Internet page: <http://www.andmercury.com.au>

Your Dealer